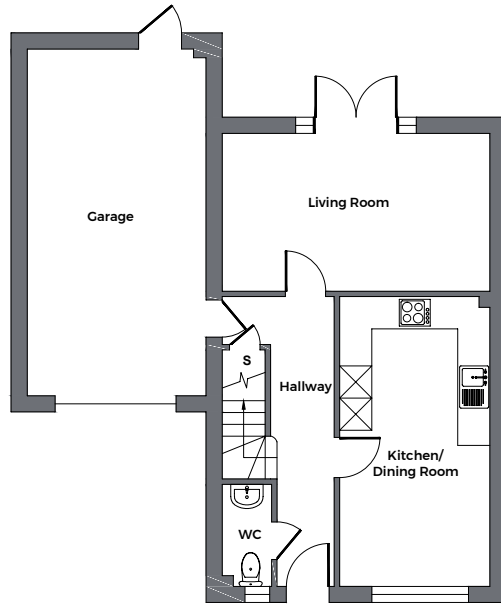




THE MILTON

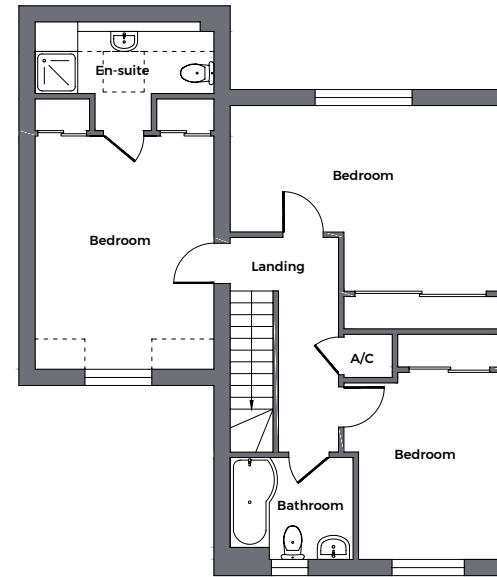
Plots: 16 & 17 | 3 Bedrooms | Total Floorspace: 1161 sqft

This spacious family home has three bedrooms with a large master and en-suite built over the integral garage. Downstairs, there is a generous living room with double doors out to the rear and a contemporary kitchen-diner.



GROUND FLOOR

Kitchen/Dining Room	5.40m x 2.80m	17'07" x 9'01"
Living Room	3.00m x 5.10m	9'08" x 16'07"
Hallway		
WC		



FIRST FLOOR

Bedroom One	3.80m x 3.00m	12'04" x 9'08"
En-suite		
Bedroom Two	5.10m x 3.20m	16'07" x 10'04"
Bedroom Three	4.60m x 3.20m	15'00" x 10'04"
Bathroom		
Landing		

Please note - plots are handed for illustrative purposes only, please ask our sales representative for further information

Floorplans represent typical layouts of this house design. They may not be shown to scale. Plot specifications, internal and external finishes, dimensions and differences to plots are dependent upon stage of build. Please check availability with a Sales Consultant before reservation. Computer generated images are indicative only and can be subject to change. Images are often shown from an imaginary open space area. Variations to the external design and landscaping may occur. Boiler and radiator positions are not shown.