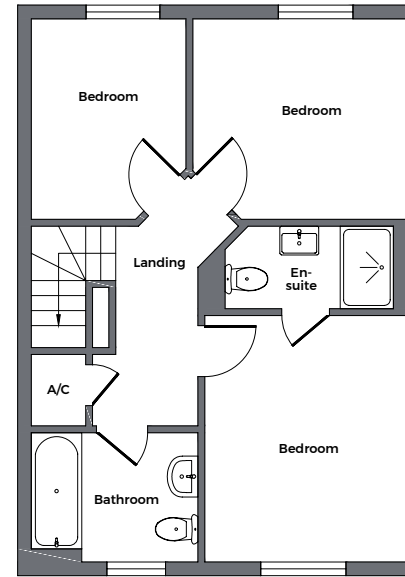
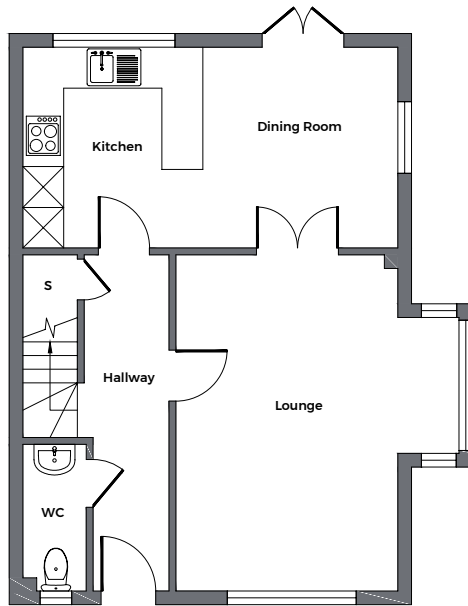




THE SWINTON

Plot: 36 | 3 Bedrooms | Total Floorspace: 957 sqft

You'll love the feeling of space in The Swinton. A large lounge with feature bay window is accessed from the hallway and, via double doors, to the well-equipped kitchen-diner. Upstairs, there are three bedrooms, an en-suite to the master bedroom, and a family bathroom.



GROUND FLOOR

Kitchen/Dining Room	5.50m x 2.90m	18'00" x 9'05"
Lounge	4.90m x 3.30m	16'00" x 10'08" + bay
Hallway		
WC		

FIRST FLOOR

Bedroom One	3.70m x 3.00m	12'01" x 9'08"
En-suite		
Bedroom Two	3.00m x 3.10m	9'08" x 10'01"
Bedroom Three	3.00m x 2.40m	9'08" x 7'08"
Bathroom		
Landing		

Floorplans represent typical layouts of this house design. They may not be shown to scale. Plot specifications, internal and external finishes, dimensions and differences to plots are dependent upon stage of build. Please check availability with a Sales Consultant before reservation. Computer generated images are indicative only and can be subject to change. Images are often shown from an imaginary open space area. Variations to the external design and landscaping may occur. Boiler and radiator positions are not shown.